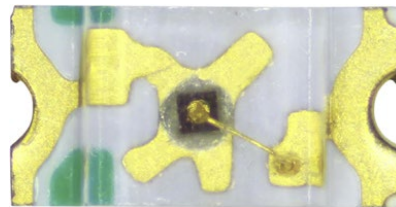


# SMD LED

Red 2.1...2.6 V 0603

## SPECIFICATION:

Package	0603
Light colour	Red
Transmission angle	130 °
Case colour	Transparent
Housing type	SMD
Conducting-state voltage max.	2.6 V
Conducting-state voltage min.	2.1 V
Dominant wavelength	631 nm
Forward current	30 mA
Forward voltage	2.1...2.6 V
Luminous intensity	80 mcd
Luminous intensity max.	80 mcd
Luminous intensity min.	80 mcd
Off-state current	10 µA
Off-state voltage	5 V
Operating temperature	-40...+85 °C
Peak wave length	645 nm
Power	78 mW
Technology	AlGaInP



## Art. Nr.

**RND 135-00045**

